

# IRWIN 54

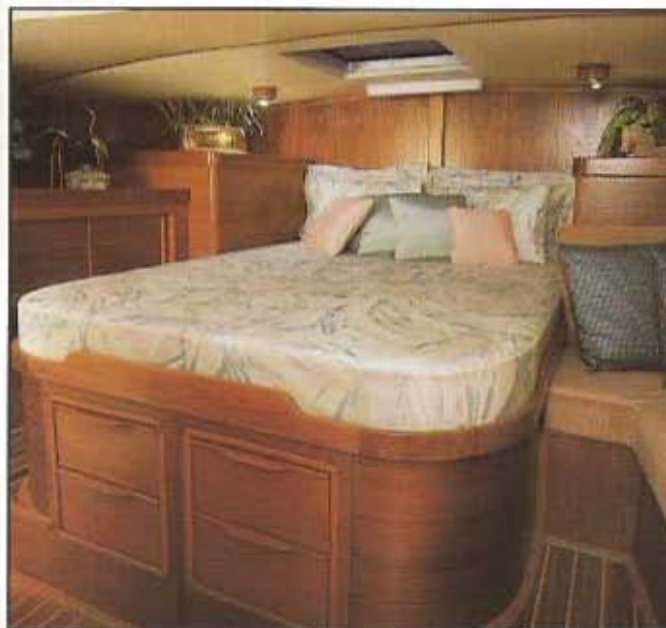




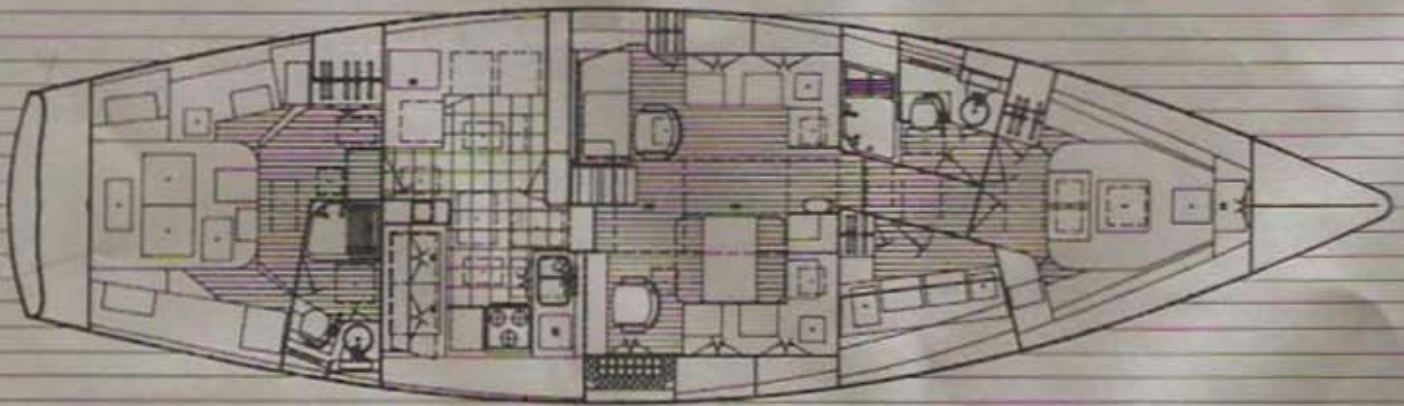
## NEW FROM IRWIN YACHT . . .

The Irwin 54, provides an opportunity for the proud owner to personalize the yacht to their individual tastes. Beginning with an impressive hull design available in sloop or ketch rig, the 54 is engineered to sail with effortless grace and speed. The sleek deck boasts a spacious walk-in cockpit well suited for easy sail handling or entertaining your family and friends. A quiet diesel auxiliary will push you along quietly when desired. Generous water and fuel capacity means long trips are possible without frequent stopping. Roller furling headstay is standard, and an electrically operated folding swim/dive platform in the transom, and fiberglass stern rail seats are also some of the exciting features available.

Below decks, the tasteful use of color coordinated micas and richly varnished teak create a feeling of warmth and spaciousness. The opulent main salon is elegantly appointed, there are 2 handsome L-shaped settees, a sophisticated navigation station, liquor lockers, and a breakfast bar with a swiveling captain's chair. The galley is a gourmet's dream, with generous space for food preparation and storage. The dining salon comfortably accommodates six to eight guests. Depending on your needs, you can choose from a two, three or four stateroom configuration. Your Irwin representative will gladly assist you with more information regarding available custom plans.

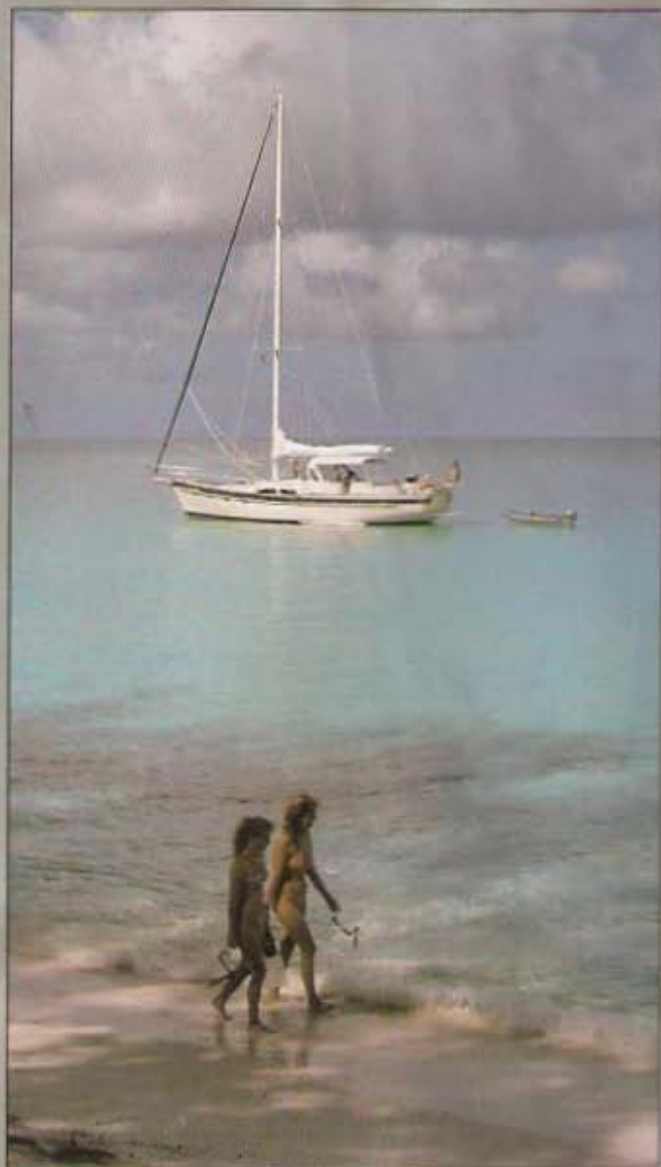


The cover, deck and salon photographs are of the Irwin 54, MAUNA LOA, available for charter in the Caribbean. Galley, head and staterooms decorated by YACHT INTERIORS, Gulfport, FL.



### SPECIFICATIONS

LOA (Sloop, including bowsprit) .....	57'-2 1/4"
LOA (Ketch, including bowsprit) .....	58'-4 1/4"
LOD .....	54'-1/4"
DWL .....	44'-0"
Beam .....	15'-4"
Standard draft .....	5'-6"
Centerboard option .....	12'-6"
Displacement at DWL .....	46,000 lbs.
Ballast .....	16,000 lbs.
Sail Area (Sloop) .....	1422 sq. ft.
Sail Area (Ketch) .....	1356 sq. ft.
Mast height above DWL (Sloop) .....	69'-10"
Mast height above DWL (Ketch) .....	66'-5"



**IRWIN**  
yacht & marine corp.

13055 49th Street N.  
Clearwater, FL 34622  
TEL 813-573-4581  
FAX 813-573-2769